

CORIAN®

SOLID SURFACES



Corian is:

The surface with extraordinary possibilities

Available in over 100 colors and unlimited custom

Stain resistant

NSF/ANSI Standard 51 Certified for food contact and Class I(A) fire rated

Durable: Tough and long-lasting

Can be renewed: Color runs all the way through, making restoration easy if necessary

An excellent choice for exterior applications

Heat-resistant

Easy-to-clean and maintain: Smooth seamless appearance.

No grout lines to catch dirt and bacteria.

Non-porous surface does not promote the growth of mold and mildew when properly cleaned

GREENGUARD Certified® as a low-emitting material



DuPont™ Corian®

Compare Corian® to other materials

Endless design options.

Characteristics*	DuPont™ Corian®	Polyster Solid Surface	Laminate	DuPont™ Zodiaq®	Granite
A. Ease of maintenance/cleanability					
B. Does not support microbial growth					
C. Non-porous-smooth					
D. Sound absorption/acoustics		no data	no data		no data
E. Low flammability - Class 1 fire rating or better					
F. Durable					
G. Low VOC/no off gassing					
H. Low smoke toxicity					
I. Initial and life-cycle cost effectiveness					
J. Slip resistance-appropriate coefficient of friction					
K. Ease of installation, demolition, and replacement					

Sample Chart

(actual colors may differ due to printing process or monitor color)

Price Group A



Glacier White

Sample Chart

(actual colors may differ due to printing process or monitor color)

Price Group B



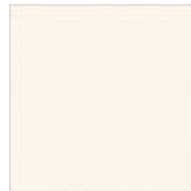
Abalone



Aurora



Bisque



Cameo White



Canyon



Cobalt



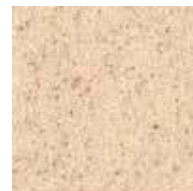
Flint



Linen



Maui



Mojave
Terra Collection



Moss
Terra Collection



Platinum
Terra Collection



Sahara
Terra Collection



Sand



Sandstone



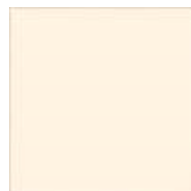
Savannah



Silt



Tarragon



Vanilla

Sample Chart

(actual colors may differ due to printing process or monitor color)

Price Group C



Acorn
Terra Collection



Adobe
Terra Collection



Antarctica
Terra Collection



Bethany
Terra Collection



Blue Pebble
Terra Collection



Cocoa Brown
Terra Collection



Cottage Lane
Terra Collection



Doeskin
Terra Collection



Fossil



Granola
Terra Collection



Gray Fieldstone
Terra Collection



Mardi Gras



Matterhorn
Terra Collection



Medea
Terra Collection



Night Sky



Oat
Terra Collection



Pine
Terra Collection



Riviera



Shale
Terra Collection



Silver Birch
Terra Collection

Sample Chart

(actual colors may differ due to printing process or monitor color)

Price Group D



Anthracite



Azurite



Blue Spice



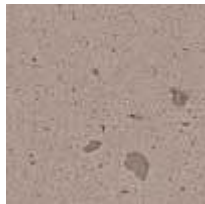
Bronzite



Canvas
Terra Collection



Cilantro



Concrete



Copperite



Designer White



Dove
Terra Collection



Fawn
Terra Collection



Graphic Blue



Green Tea
Terra Collection



Hot



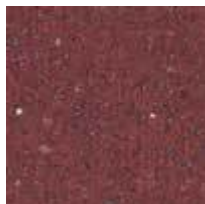
Mandarin



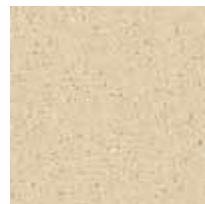
Nocturne



Olivite



Pompeii Red



Raffia
Terra Collection

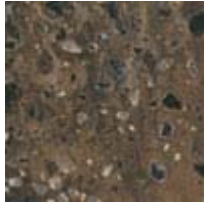


Rice Paper
Terra Collection

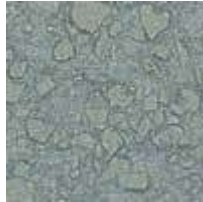
Sample Chart

(actual colors may differ due to printing process or monitor color)

Price Group E



Allspice



Aqualite
Terra Collection



Arctic Blueberry



Arctic Ice



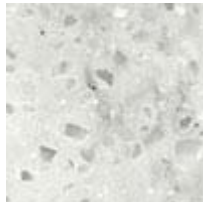
Arctic Lime



Arctic Mint



Arctic Strawberry



Arrowroot



Aztec Gold



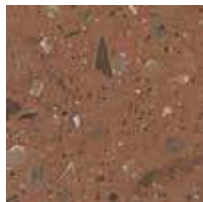
Basil



Blueberry Ice



Burled Beach



Cinnabar



Clam Shell



Clove



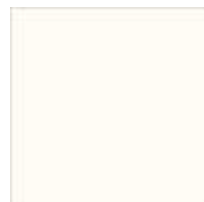
Earth



Ecru



Elderberry



Glacier Ice



Graylite
Terra Collection

DuPont™ Corian® Commercial Care In Use

DuPont™ Corian® solid surfaces meet the demanding needs of today's commercial surfacing applications. As a solid, non-porous surface, Corian® can be maintained with minimum care to retain the original appearance. Because it can be repaired, Corian® will still look and perform like a new installation, while other surfacing materials will often need to be replaced. With proper care the Corian® surfaces in your commercial application will stay looking like new.

For more information, call 1-800-4Corian (1-800-430-6072).

Routine Care

There are three types of Corian® Solid Surface finishes: matte/satin, semigloss and high-gloss. Contact your Corian® sales expert if you are unsure of your finish. Most countertops and all sinks and lavatories are finished with a matte/satin finish. Soapy water, ammonia-based cleaners or commercially available solid surface cleaners will remove most dirt and residue from all types of finishes. Stubborn residue will require a little stronger cleaner. Follow the recommendations below to properly clean your Corian® Solid Surface application.

Conventional Cleaning Techniques

- Washing with soap and water is usually sufficient to remove surface dirt or stains. Be sure to wipe surface completely dry.
- Ammonia based liquid cleaner (not window cleaner) may also be used. Always rinse surface thoroughly and wipe dry.
- Drying is an important step, preventing a build-up of soap film or cleaning residue, which can create the appearance of light scratches over time. In the event this occurs, apply a mild abrasive cleaner to a damp sponge or white Scotch-Brite® pad and rub into the surface in a circular motion. When finished, rinse thoroughly to remove all cleaner, then wipe completely dry.
- Stubborn soap film or cleaning residue build-up in Corian® is easily removed with abrasive cleanser and a white Scotch-Brite® pad or a sponge.
- For darker colors, a polish may be used to enhance the shine. For areas where there may be food contact, always use a polish formulated for food contact areas, such as Countertop Magic®. Where food contact is not a possibility, a simple furniture polish may be used. Always follow the manufacturer's instructions for using the polish and for safety concerns.

Cleaning Agents

Corian® is unaffected by common household and commercial cleaners such as

- Powdered abrasive cleansers (like Comet®)
- Ammonia
- Strong detergents
- Oxalic acid solutions
- Dilute hydrochloric acid solutions
- Dilute trisodium phosphate solutions

Acid drain cleaners may cause surface damage and should not be used on Corian® solid surfaces.

Cigarette Burns, Stubborn Stains

Unlike other surface materials stains or marks caused by cigarettes, alcohol, food, lipstick, hair dye, shoe polish, iodine, marking pens, etc. can be removed by using an abrasive cleanser and a Scotch-Brite® pad.

- If the surface has a **matte finish**, use a **green Scotch-Brite® pad**
- If the surface has a **gloss finish**, use a **white Scotch-Brite® pad**

This type of maintenance will not harm the Corian® surface, and will restore it to "like new" condition.

Surfaces of Corian® can be repaired with no permanent damage. Tough to remove stains, fine scratches, and small cuts can be removed using standard repair techniques.

Professional repair

Contact DuPont (800.426.7426), or your supplier, for information on how to have your Corian® surfaces professionally restored to their original finish

Making your own repairs

- To restore a matte finish - use 220 grit sandpaper followed by hard buffing with a green Scotch-Brite® pad in a circular motion.
- To restore a semi-gloss - use the 220 grit sandpaper, followed by 320 grit, followed by 400 grit. Then blend the finish in by using abrasive cleanser and a sponge or rag.
- A high gloss finish is best restored by a professional. Contact your supplier or DuPont.
- If the damage is particularly deep, use a random orbital sander equipped with vacuum dust collection. Start with 120 grit sandpaper first, followed by 180-220 grit. After sanding, a uniform matte finish can be obtained by buffing with a green Scotch-Brite® buffing pad. For a semi-gloss, continue sanding with 320 followed by 400 grit. Then buff with a gray Scotch-Brite® pad.

The impact resistance of Corian® allows it to withstand harsh use without chipping, breaking, or cracking. However, if damaged due to extreme abuse, satisfactory repairs can often be made. Contact DuPont for guidance.

Preventing Damage

Avoid Strong Chemicals

Some chemicals are not compatible with Corian®. Avoid surface contact with:

- Strong chlorinated solvents
- Chloroform
- Ketones
- Methylene chloride (paint removers)
- Very strong acids such as concentrated sulfuric and hydrochloric acids
- Acid drain cleaners should not be used.

Surfaces exposed to these agents should be promptly flushed with water. Contact for even a short period of time can cause surface damage, spots, or staining. Follow the recommended repair procedures described above as needed to repair and/or restore the surface to its original condition. Severe damage caused by incompatible chemical contact will require professional repair. Again, contact DuPont, or your supplier for assistance.

While Corian® withstands heat better than most surface materials, do not place hot cookware directly on a Corian® surface. To avoid damage caused by excessive heat:

- Always use a trivet or hot pad under hot cookware
- Always use a trivet with minimum ¼" legs under small electrical appliances such as fryers and cookers

A Corian® surface can be scratched or gouged if used as a cutting or chopping surface for food preparation. Scratches can be repaired, but to avoid the problem, use of a cutting board is highly recommended.

The information contained in this Technical Bulletin is given by E. I. du Pont de Nemours and Company free of charge. It is based upon technical data which DuPont believes to be reliable and is intended for use by persons having knowledge of this technical area at their own discretion and risk. Seller assumes no responsibility for results obtained or damage incurred from the use of this Technical Bulletin either in whole or in part by a buyer of Corian®.

Scotch-Brite® is a registered trademark of the 3M Company. Countertop Magic® is a registered trademark of Magic America Corp. Comet® is a registered trademark of Proctor & Gamble.

Copyright © 2006 DuPont. All rights reserved. The DuPont Oval Logo, DuPont™, The miracles of science™ and Corian® are registered trademarks or trademarks of E. I. du Pont de Nemours and Company or its affiliates.



corian.
SOLID SURFACES