

# Refrigerated High Profile Mobile Merchandiser

R-MB-MR-HPRO-2, R-MB-MR-HPRO-4, R-MB-MR-HPRO-6

## APPLICATIONS

- Self-service merchandiser for packaged deli items/sandwiches/salads/soft drinks
- Impulse sales and add ons
- Forced air refrigeration
- Medium temperature (36°-40°)

## STANDARD FEATURES

### CABINET CONSTRUCTION

- Base - steel frame construction  
 Exterior - 3/4" plywood panels  
 Finished in high pressure plastic laminate
- Powder coated steel Interior
- 3-1/2" Swivel Casters (front casters lock)
- 1 row of protective 1" bumper
- Removable deck pans

### SHELVING

- 2 Adjustable metal shelves and deck pans are easily removeable
- Full height shelf support pilasters with slotted holes on 1" centers for vertical shelf adjustments

### REFRIGERATION SYSTEM

- Self-contained system
- Condensate removal through a floor drain
- Solar thermometer and refrigeration control on front of unit

### ELECTRICAL REQUIREMENTS

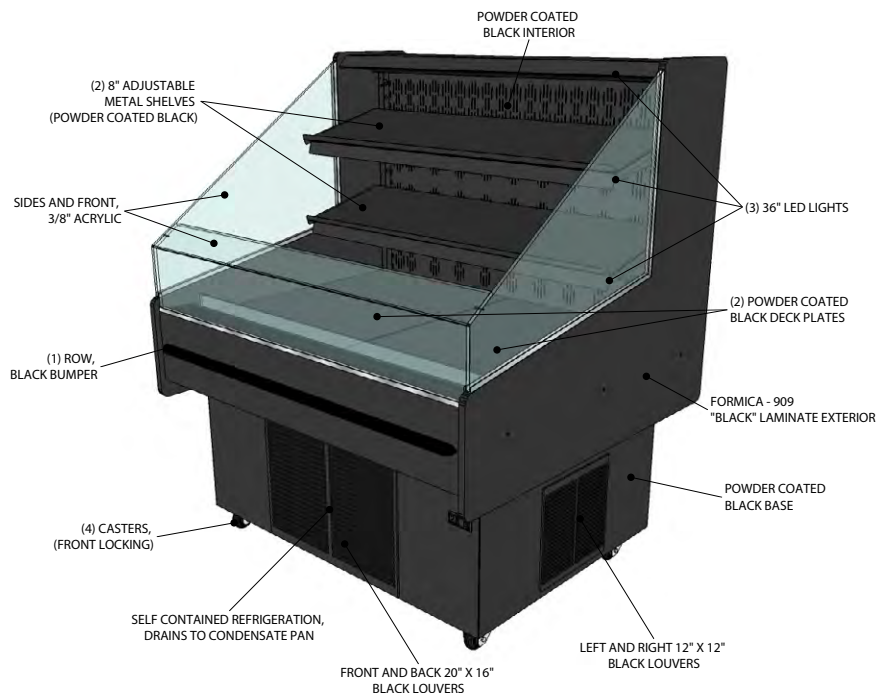
- Unit is ready to accept 120V, 60Hz, 1Phase circuit cord set. (see reverse for details)

### WARRANTY

- One year - Parts and Labor

## OPTIONS / ACCESSORIES

- Many laminate and powder coat colors available
- Night cover available
- Optional condensate removal devices available to eliminate need for plumbing.
- Ticket Molding
- Product enhancing LED lighting
- Stainless Steel interior
- Adjustable 19" top dry shelf / extra shelves for interior
- Wire or glass shelves

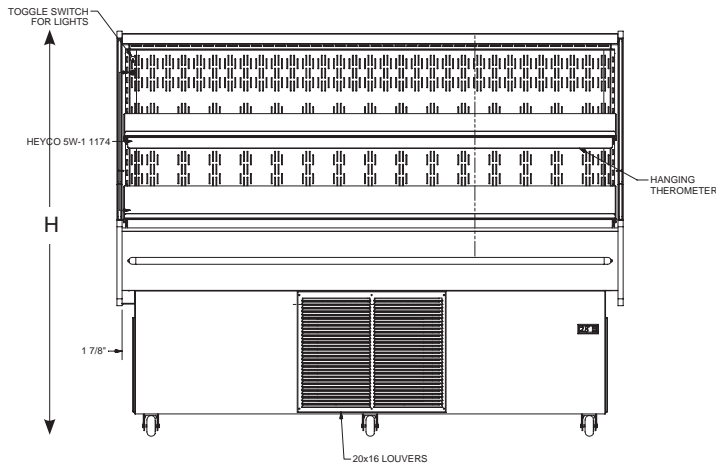


Engineered for stores with ambient conditions not to exceed 75°F and 55% relative humidity. Due to continuous improvements specifications may change without notice.

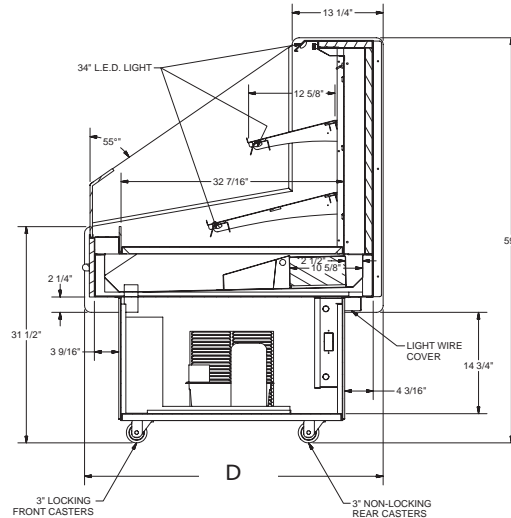
Built to meet the following specifications:



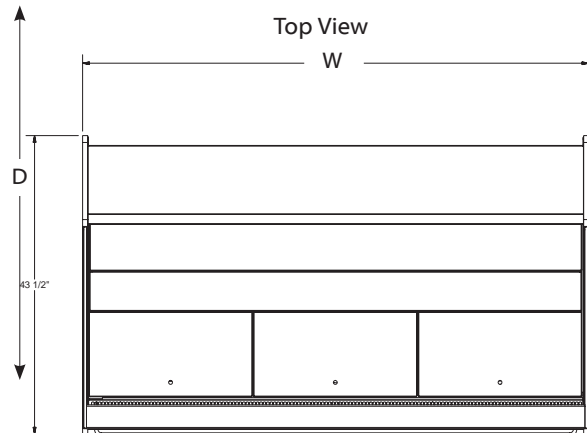
Front View



Side View



Top View



Unit Length	Dimensions (inches)		
	W	D	H
2'	24	44 1/4	59
4'	48	44 1/4	59
6'	74	44 1/4	59

Height noted here does not include optional dry shelf

## ELECTRICAL/REFRIGERATION SPECIFICATIONS (BASED ON 6' UNIT)

ELECTRICAL REQUIREMENTS - ON 6' CORD NEMA 14-20F PLUG						
QTY	DESCRIPTION	MANUFACTURER	MODEL #	VOLTAGE	AMPS EA	AMPS TOTAL
6	34" LED LIGHTS	ELECTRALED	EFDS-3-3500	120	0.3	1.8
1	CONDENSING UNITS	TECUMSEH	AJA7480	208	10.3	10.3
2	FAN	EBM PABST	W1G200-EA95	120	0.48	0.96
1	DIGITAL TEMP CONTROL	DIXELL	XR20C	120	0.025	0.025
TOTAL ELECTRICAL REQUIRED WITHOUT OPTIONAL DRY SHELF IS 120/208 V, 60 Hz, 1 PH						10.835
1	34" LED LIGHT (W/OPTIONAL DRY SHELF)	LOUISVILLE LAMP	LEUI-3400-5435-000	120	0.3	0.3
TOTAL ELECTRICAL REQUIRED WITH OPTIONAL DRY SHELF IS 120/208 V, 60 Hz, 1 PH						11.135

REFRIGERATION SPECS						
QTY	DESCRIPTION	MANUFACTURER	MODEL #	BTU'S EA.	EVAP TEMP	REF. TYPE/OZ.
1	AIR OVER DISPLAY	R&D FIXTURES	N/A	8000	+20°	404A