

## APPLICATIONS

- Self-service merchandiser for packaged hot foods such as rotisserie chicken, Ready-to Eat meats/meals
- Overhead Heating + Hot Plate
- Heated deck plates combined with overhead heat radiate warmth uniformly

## STANDARD FEATURES

### CABINET CONSTRUCTION

- Base Cabinet consists of 3/4" plywood finished in high pressure plastic laminate
- Black Powder Coated Canopy
- Stainless steel counter top warming plate
- Tempered glass sides help contain heat inside product display area
- 10" Base with dry display shelf includes price tag molding
- One row of protective vinyl bumper guard

### HEATED SHELVING

- Stainless steel warming deck
- Digitally controlled, NSF-4 heated deck plates radiate warmth.
- Overhead heat/lighting provides uniform warm, keeping product at optimum temperature
- Tempered glass product stops

### ELECTRICAL REQUIREMENTS

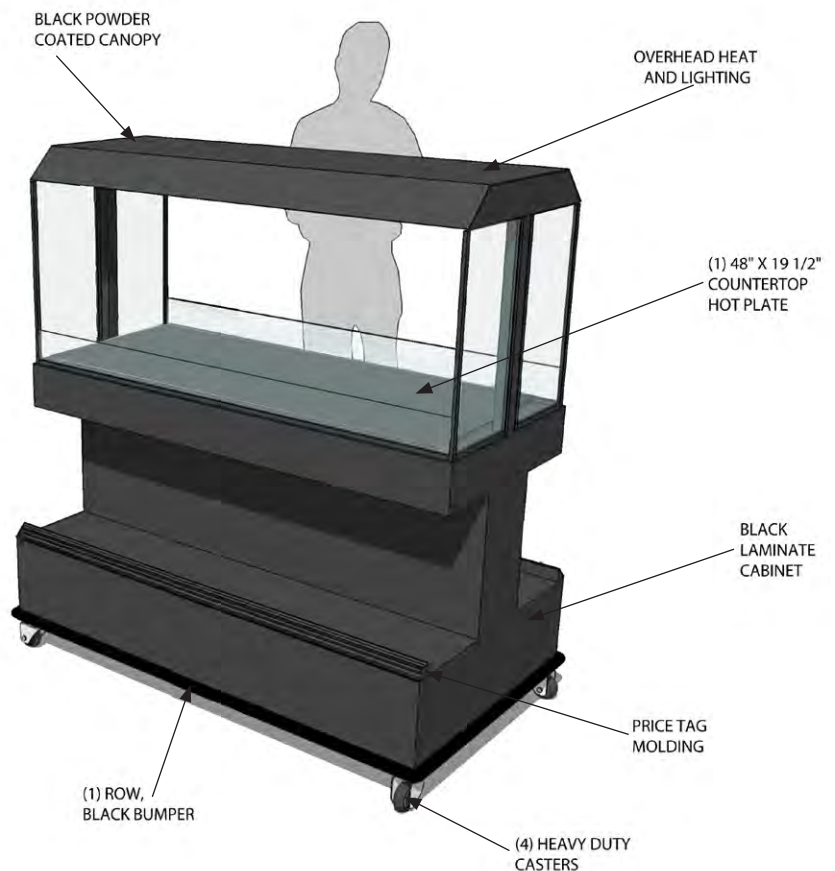
- Pre-wired and furnished with a junction box for use on a dedicated 120V, 60Hz, 1 phase, 20 AMP circuit
- Built in accordance with NEC, UL and NSF standards.
- Choose top or bottom plug mount when ordering

### WARRANTY

- One year - Parts and Labor

## OPTIONS / ACCESSORIES

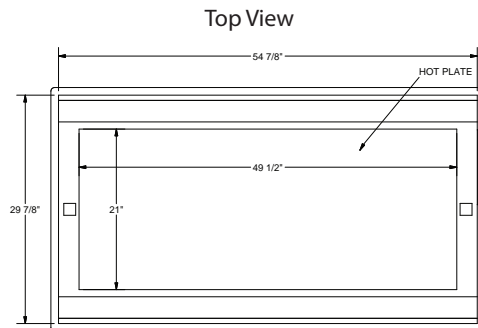
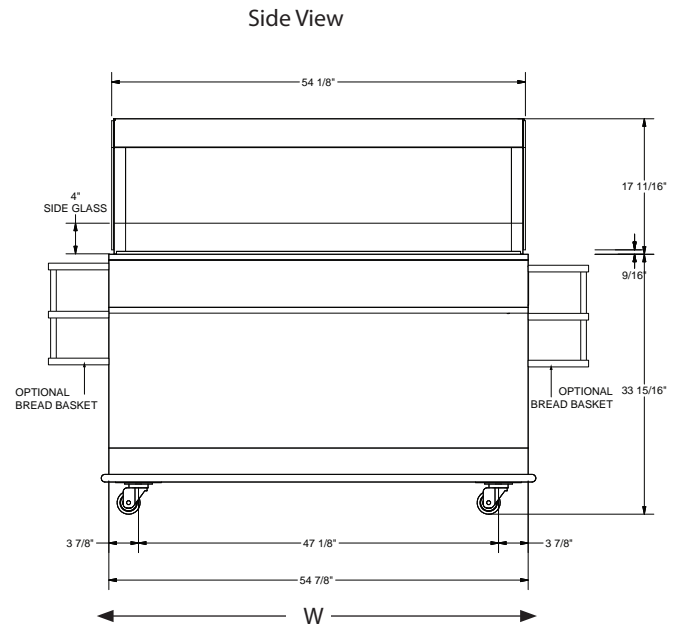
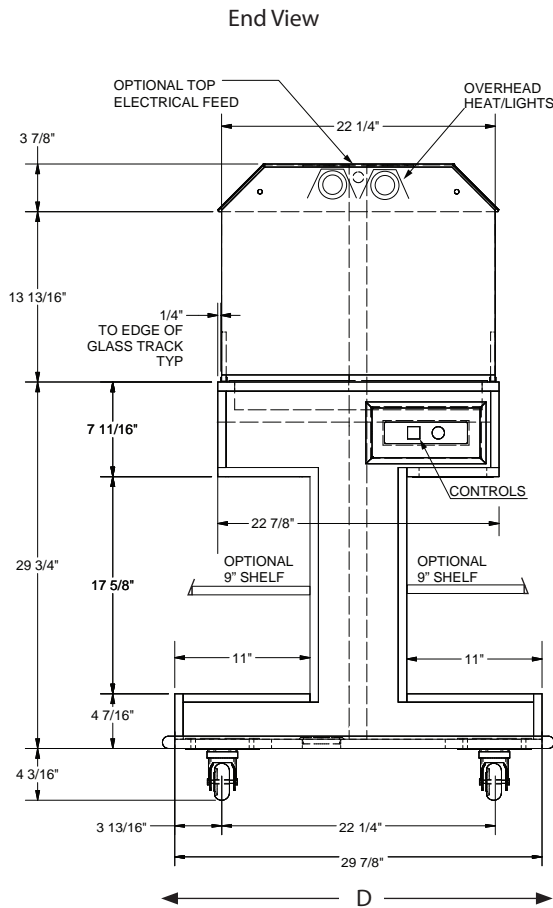
- Assorted colors for vinyl bumper and powder coat
- Many laminate finishes available
- Circuit Breaker in lieu of junction box
- Extra shelving and end bread baskets (see drawings on reverse side)



Engineered for stores with ambient conditions not to exceed 75°F and 55% relative humidity. Due to continuous improvements specifications may change without notice.

Built to meet the following specifications:





Single Tier Rotisserie Chicken Merchandiser	Dimensions (inches)			Volts	Phase	AMPS
	W	D	H			
55" x 30"	55	30	52	120	1	15.3

## ELECTRICAL SPECIFICATIONS

### ELECTRICAL REQUIREMENTS - (WIRED TO NEMA 5-20P PLUG)

QTY	DESCRIPTION	MANUFACTURER	MODEL #	VOLTAGE	AMPS EA	TOTAL AMPS
2	OVERHEAD HEAT/LIGHT	HATCO	HL-48-2	120	3.5	7
1	HOT PLATE	HATCO	GRSB-48-I	120	8.3	8.3
TOTAL ELECTRICAL REQUIRED IS 120V, 60 Hz, 1 PH						15.3