

Sandwich/Sushi/Pizza Prep Case

SSP-PR-4, SSP-PR-6, SSP-PR-8

APPLICATIONS

Food prep case featuring:

- Refrigerated display and prep counter plus optional refrigerated rear storage (Remote refrigeration only)
- Prep counter comes with 1/3 size pans
- Work surface features removable, USDA grade, polycarbonate cutting boards.

STANDARD FEATURES

CABINET CONSTRUCTION

- Unit built with 18 Gauge steel frame
- Exterior - 3/4" plywood panels finished in high pressure plastic laminate
- Stainless steel cold well with galvanized steel underneath exterior
- Rear dry storage with (1) adjustable shelf
- Protective 1" cart bumpers
- Stainless steel corner protectors

SNEEZE GUARD

- Stainless Steel 1-1/4" round tubing
- Straight tempered glass

REFRIGERATED COLD ZONES

- Remote refrigeration with blower coil and solenoid valve system wired to standard refrigeration control.
- Cold well adapter bars allow for a variety of pan configurations.
- Digital readout thermometer
- LED product lighting
- Supplied with 1" drain
- Energy saving Axial fans reduce electrical running cost by up to 80%

-Coppered Cold Well

- NSF-7 refrigerated, coppered cold well
- Rated at 300 BTUs per full inset pan

-Air Over/Air Under Cold Wells

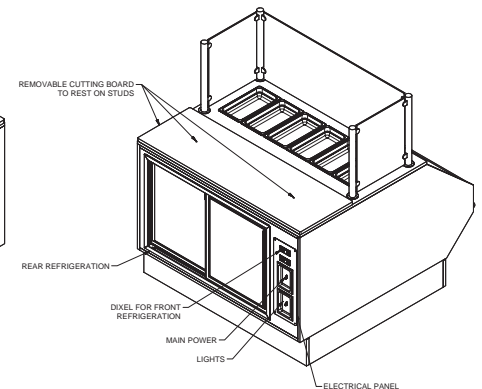
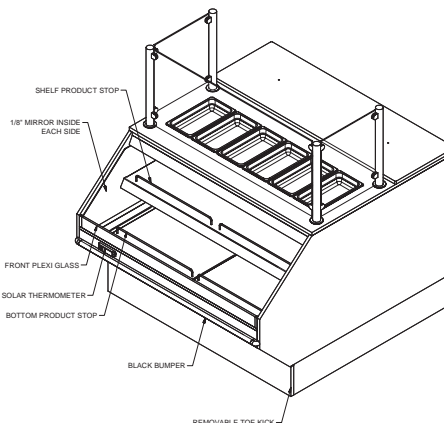
- Rated at 650 BTUs per full inset pan

ELECTRICAL REQUIREMENTS

- Unit is prewired and furnished with a junction box for use on a dedicated 120V, 60Hz, 1 phase circuit.

WARRANTY

- One year - Parts and Labor



Shown with optional rear refrigerated storage.

Engineered for stores with ambient conditions not to exceed 75°F and 55% relative humidity. Due to continuous improvements specifications may change without notice.

OPTIONS

- Curved tempered glass sneeze guard
- Extra shelves
- 1-1/4" adjustable levelers provided at all 4 corners (Unit must be leveled plumb at time of installation)
- Night covers for food pans
- Optional condensate removal devices available to eliminate need for plumbing.
- Powder coated interior and sneeze guard frame
- Counter top: laminate, stainless steel, solid surface, or quartz engineered stone (many colors available)

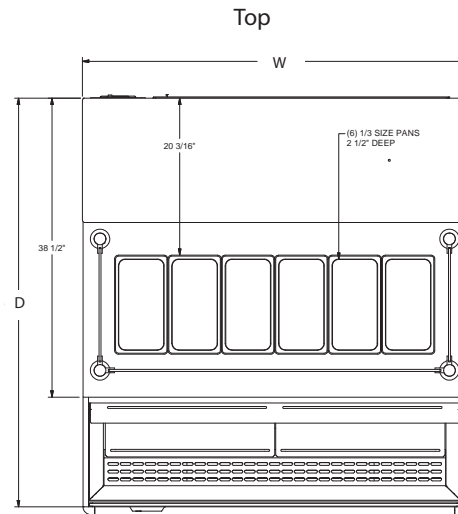
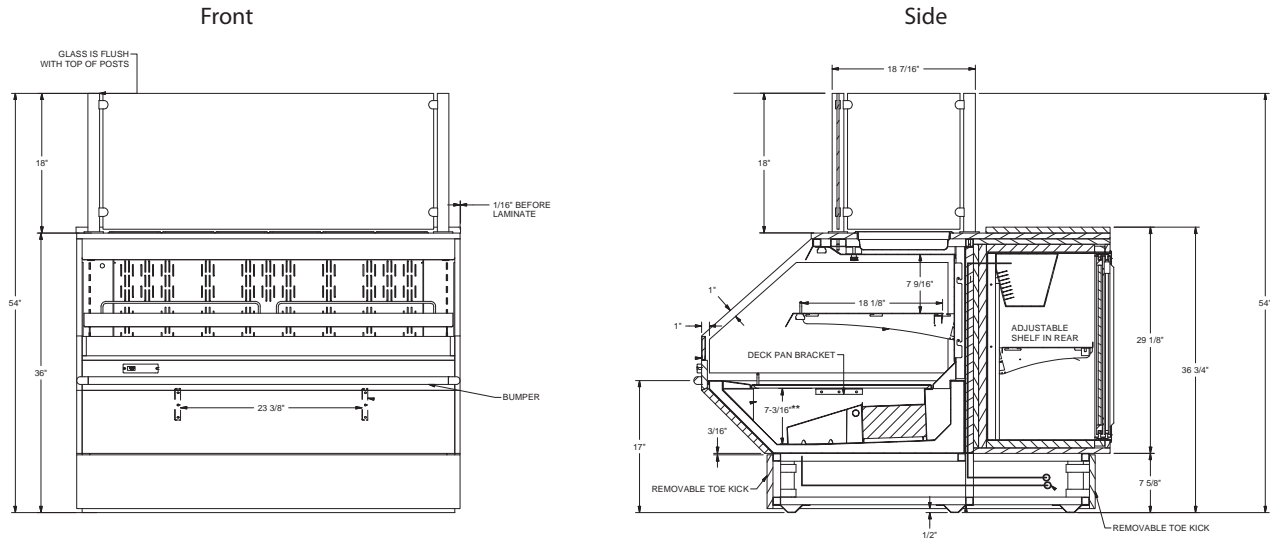
- Wire or glass shelves instead of sheet metal
- End panels with mirrored interior, solid (wood with laminate), or glass
- Bar packages can provide inset pans, lids, tongs, ladles, serving spoons and salad dressing templates.

REAR REFRIGERATED STORAGE

- Blower coil with NSF certified coating
- Wire shelving
- Clear insulated sliding doors
- Incandescent lights and thermometer

Built to meet the following specifications:





| Unit Length | # of 1/3 Size Pans | Dimensions (inches) (Tray Slides Open) | | |
|-------------|--------------------|--|----|----|
| | | W | D | H |
| 4' | 6 | 50 | 53 | 54 |
| 6' | 9 | 74 | 53 | 54 |
| 8' | 11 | 98 | 53 | 54 |

ELECTRICAL/REFRIGERATION SPECIFICATIONS (BASED ON 6' UNIT WITH REAR REFRIGERATOR)

ELECTRICAL REQUIREMENTS -

| QTY | DESCRIPTION | MANUFACTURER | MODEL # | VOLTAGE | AMPS EA | AMPS TOTAL |
|--|-------------|--------------|---------------|---------|---------|------------|
| 2 | LED LIGHTS | ELECTRALED | EFDS-3-3500 | 120 | 0.17 | 0.85 |
| 1 | COIL FAN | EBM PAPST | 1G200-EC95-Y7 | 120 | 0.48 | 0.48 |
| 1 | COIL | COPELAND | VAK08 | 120 | 2.4 | 2.4 |
| 1 | COIL | COPELAND | N/A | 120 | 2 | 2 |
| TOTAL ELECTRICAL REQUIRED IS 120V, 60 Hz, 1 PH | | | | | | 5.38 |

REFRIGERATION SPECIFICATIONS

| QTY | DESCRIPTION | MANUFACTURER | MODEL # | BTU'S EACH | EVAP TEMP | REF. TYPE/OZ |
|-----|----------------------------|--------------|---------|------------|-----------|--------------|
| 1 | REFRIGERATION | R&D FIXTURES | N/Z | 2200 | +20° | R-22 |
| 1 | REAR REFRIGERATION STORAGE | R&D FIXTURES | N/Z | 800 | +20° | R-22 |